

What people in the 1916 Easter rising wore

---

Women in the 1916 rising wore long dresses (that were nearly to their ankles).

Along with their hats some of the women wore feather scarfs or fluffy scarfs

They also wore fancy hats, some hats had feathers on them.



Here are some of the hats the women wore in the 1916 Easter rising



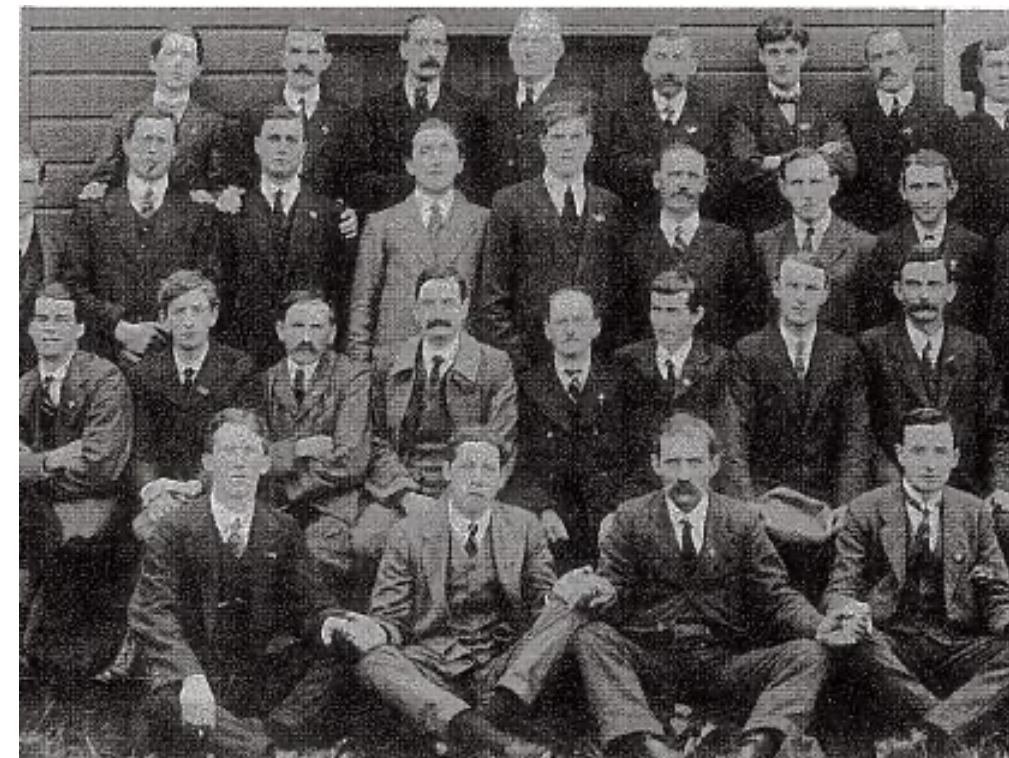
Most men were in the 'IRA' so most of them just wore their uniform



A lot of soldiers had pockets for grenades or guns as shown here



For men that were not in the 'IRA' wore suits or long coats



This is some of the things the soldiers would hold in these pockets



(Guards actually retrieved these from the 1916 rising)



Men also wore hats all the hats were different shapes and sizes some hats were apart of their uniform and some people just wore.

**Paddy hat**



**Uniform hat**



**Uniform hat**

